



CATALOG

Edition 2024-25

ZUPER 6 (230V)



Current Range 160 AMPS
Duty Cycle (40%) 60%@160A

TECHARC 200 (230V)



Current Range 200 AMPS
Duty Cycle (40%) 60%@200A

NOVASTICK 205 PFC (110-230V)



Current Range 200 AMPS
Duty Cycle (40%) 60%@200A

MAXIMUS 2000i CEL (230V)



Current Range 200 AMPS
Duty Cycle (40%) 35%@200A

ZUPER 300 (240V/415V)



Current Range 300 AMPS
Duty Cycle (40%) 60%@300A

STICKWEL - K300HD (220V/440V)



Current Range 20-300 AMPS
Duty Cycle (40%) 60%@300A

TECHARC 400i (415V)



Current Range 0-400 AMPS
Duty Cycle (40%) 100%@400A

MAXIMUS -4000i - CEL (415V)



Current Range 20-400 AMPS
Duty Cycle (40%) 60%@400A

DESERT 630 HD (415V)



Current Range 10-630 AMPS
Duty Cycle (40%) 60%@630A

WELDING CABLE TECHWELD



DOUBLE INSULATED
ORANGE (TPR)

Size	Length
35 sq.mm	100 Mtr
50 sq.mm	100 Mtr
70 sq.mm	100 Mtr

ELECTRODE HOLDER BRASS GRIP



MODEL : 82HEL WM

EARTH CLAMP BRASS GRIP



MODEL : WI600

**PORTABLE ELECTRODE OVEN
DUAL - VOLTAGE**



110V/220V
5 KG
MODEL - A5ST

**PORTABLE ELECTRODE OVEN
110V/220V-240V**



TQ-93S
9KG

T7-SS
7KG

TQ-97SI
9KG

BENCH TYPE ELECTRODE OVEN 150 KG



50°C - 300°C
220V - 240V

MODEL AR-150

Expat 2000i DCP (230V)



Current Range 10 to 200 AMPS
Duty Cycle (40°) 40% @ 200A

Expat 2000i AC/DCP (230V)



Current Range 3 to 210 AMPS
Duty Cycle (40°) 60% @ 210A

TIGWEL - K 300HD (220V/380V/440V)



Current Range 300 AMPS
Duty Cycle (40°) 50% @ 300A

EXPAT - 3000i AC/DCP (415V)



Current Range 10 to 300 AMPS
Duty Cycle (40°) 60% @ 300A

Expat 4000i DCP (415V)



Current Range 10 to 400 AMPS
Duty Cycle (40°) 60% @ 400A

EXPAT - 5000i ACDCP (415V)



Current Range 10 to 500 AMPS
Duty Cycle (40°) 60% @ 500A

TIG TORCH ARGON



Model	Length
AWP26V - 12 - 2	4 Mtr
AWP26V - 25 - 2	8 Mtr
AWP26VFX - 12 - 2	4 Mtr
AWP26VFX - 25 - 2	8 Mtr
WP 26V - 12 - 2	4 Mtr

TUNGSTEN ROD FOR TIG WELDING



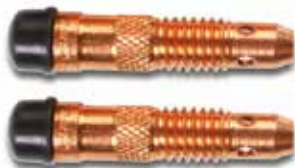
Colour	Size	Packing
Red /	1.6 mm	10 Pcs/Pkt
Yellow/ Green	2.4 mm	10 Pcs/Pkt
	3.2 mm	10 Pcs/Pkt

COLLET FOR TIG TORCH



Model	Size
10N23	1/16 (1.6mm)
1024	3/32 (2.4mm)
10N25	1/8 (3.2mm)

COLLET & BODY FOR TIG TORCH



Model	Size
10N23	1/16 (1.6mm)
1024	3/32 (2.4mm)
10N25	1/8 (3.2mm)

LONG BACKCAP FOR TIG WELDING

MODEL : 57Y02



MODEL : 57Y04

ARGON GAS REGULATOR



MODEL : ARG-T001

ALUMINA NOZZLE/CERAMIC CUP FOR TIG TORCH



Model	Size
10N44	No. 12
10N45	No. 10
10N46	No. 8
10N47	No. 7
10N48	No. 6
10N49	No. 5
10N50	No. 4

ARGON GAS HOSE (REINFORCED) 200 PSI/14 BAR



MODEL : 82GH

TIG TORCH HEAD



WP26V

WP26VFX

MULTI WELDER TECH M400 (415V)



Current Range 50 TO 400 AMPS
Duty Cycle (40°) 60%@400A

TECH M500 (415V)



Current Range 50 TO 500 AMPS
Duty Cycle (40°) 60%@500A

MIGWEL - K400HD (220V/380V/440V) / AMIG 500PM



Current Range 50 TO 400 AMPS
Duty Cycle (40°) 60%@400A

ATM 500HD (220V/380V/440V)



Current Range 50 TO 500 AMPS
Duty Cycle (40°) 100%@500A

MIG TORCH (BER)



MODEL : NQ400

MIG TORCH (PAN)



MODEL : NS350

MIG TORCH (TWE)



MODEL : NT4

MIG TORCH (PSF)



MODEL : PSF 405

MIG TORCH LINER



TIP HOLDER



CONTACT TIP



GAS NOZZLE



BRASS AND BRASS GROUND CLAMP



600 AMPS

CO₂ GAS REGULATOR WITH HEATER

MODEL : CO-T100



CABLE CONNECTOR



Sizes
10 mm ²
35 mm ²
50 mm ²
70 mm ²
95 mm ²

EVERLAST GOUGING 1250i (415V)



Current Range 60 TO 1250 AMPS
Duty Cycle (40%) 100% @ 1250A

EVERLAST 1250i SAW (415V)



Current Range 60 TO 1250 AMPS
Duty Cycle (40%) 100% @ 1250A

FLUX WELDING OVEN 200 KG



Temperature Range
50°C - 300°C

Model: AF 200L

BAKING OVEN TOV 300, 300 KG



Temperature Range
50°C - 300°C

BAKING OVEN TOV 400, 400 KG



Temperature Range
50°C - 400°C

Portable Gas Cutting Kit (OXY/ACTY)



OXYGEN GAS REGULATOR



MODEL : TRO 001 MODEL : TRO 002

ACETYLENE GAS REGULATOR



MODEL : TRA 001 MODEL : TRA 002

PIPE CUTTER TECHWELD TCG2



Cutting dia meter 108 mm - 600 mm

PLATE CUTTER TECHWELD TCM P200



Input Voltage 230V

WELD GAUGE FILE FOR WELDING MEASUREMENT



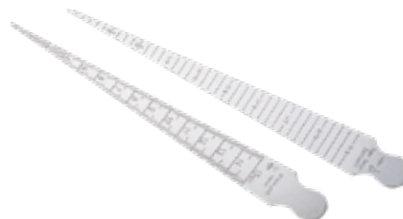
MODEL : MG - 11

WELD GAUGE FILE FOR WELDING MEASUREMENT



MODEL : MG - 8

TAPER GAUGE STAINLESS - 6 INCH



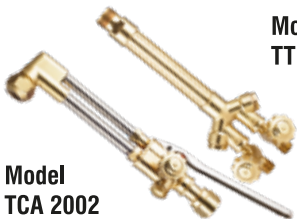
MODEL : TW 015

SINGLE PURPOSE WELDING GAUGE



MODEL : TW 012

Cutting Torch (OXY/ACETY)



Model TTH 2002

Model TCA 2002

CUTTING TORCH KIT - CT 900



PISTOL LIGHTER



TW-0010

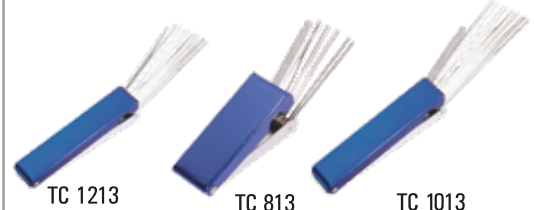
ACETYLENE GAS CUTTING TIP



PROPANE & NATURAL GAS CUTTING TIP



TIP CLEANER FOR FLAME TIP



TC 1213

TC 813

TC 1013

FLASH BACK ARRESTOR FOR TORCH REGULATOR



MODEL : TH 188

SPARK LIGHTER FOR GAS CUTTING



MODEL : M1-SL-3F

CYLINDER KEY



MODEL : TW-023

NIPPLE & NUTS

3/8" 9/16" 1/4"



WELDING CONSUMABLES



MMAW	
CATEGORY	AWS
MILD STEEL AND HIGH TENSILE (Size - 2.5mm - 5.0mm)	E 6013, E 7018, E 7018-1H4R E 6010
STAINLESS STEEL (Size 2.0mm - 4.0mm)	E 308L-16, E 309L-16, E 316L-16 E 2209, E 309Mo -16, E 347-16
ALUMINIUM (Size - 2.4mm - 4.0mm)	E 4043


E 71T-1C MIG WIRE

TIG FILLER WIRE ER 4043, ER 5356

ER 70S-6 SOLID MIG WIRE

GMAW	
CATEGORY	AWS
WELDING WIRE FOR MILD STEEL AND HIGH TENSILE STEEL (Size - 0.8mm, 1.0mm, 1.2mm, 1.6mm)	ER 70S-6, ER 70S-2 ER 70S-3
WELDING WIRE FOR ALUMINIUM (Size - 1.6mm - 2.4mm)	ER 4043
WELDING WIRE FOR ALUMINIUM (Size - 1.6mm - 3.2mm)	ER 5356

FCAW	
CATEGORY	AWS
WELDING WIRE FOR MILD STEEL AND HIGH TENSILE STEEL (Size - 1.2mm & 1.6mm)	E 71T-1C E 71T-1M E 81T-1C
WELDING WIRE FOR STAINLESS STEEL (Size - 1.2mm & 1.6mm)	E 308 LT1-1 E 309 LT1-1 E 316 LT1-1

GTAW	
CATEGORY	AWS
TIG FILLER WIRE FOR STAINLESS STEEL (Size - 1.6mm - 2.4mm)	ER 308L ER 309L ER 316L ER 2209
TIG FILLER WIRE FOR ALUMINIUM (Size - 1.6mm - 3.2mm)	ER 4043 ER 5356

TWIN LINE WELDING HOSE (OXYGEN, ACETYLENE)

Features:

- ⚡ Resistance to normal operation and weather condition in welding service .
- ⚡ Tube and cover with SBR/NR compound.
- ⚡ Reinforcement with high strength synthetic .
- ⚡ Blue or Green for Oxygen, Red for acetylene.



PRODUCT DETAILS

PART CODE	30TH
BRAND	TECHWELD
PRODUCT DESCRIPTION	TWIN WELDING HOSE
UOM	ROLL
COUNTRY OF ORIGIN	INDIA

ADDITIONAL PRODUCT INFORMATION

Tube	Natural - synthetic rubber compound blend
Reinforcement	High strength synthetic yarn / fiber braiding
Cover	Smooth or fluted cover of rubber for lasting performance under severe working condition
Temp range	-250c + 800c (-130f + 1760f)
Applications	For use with welding / cutting & allied process in workshop & Engineering industries
Properties	Ozone resistance, heat resistance flexible / uniform thickness
Standard colour	Inner tube – black, outer cover - blue / red / green
Finish	Smooth
Standard	ISO 9001:2015, BS ISO 3821

Internal Diameter		Outer Diameter	Working Pressure		Bursting Pressure		Weight	Std Length
Inch	mm	mm	bar	psi	bar	psi	kg/m	mtr.
1/4	6	13	20	300	60	900	0.350	100/50
5/16	8	15	20	300	60	900	0.470	100/50
3/8	10	17	20	300	60	900	0.520	100/50

FLEXARC RUBBER WELDING CABLES

WELDING CABLES




- | Double Insulated
- | Extra Flexible
- | Orange & Black Jacket

10 Sq. mm. to 400 Sq. mm. | 600 Volts, 1100 Volts | -30°C to + 90°C

CABLE STRUCTURE:

- Conductor** : High Conductivity, bare annealed copper flexible conductor
EC copper class 5 and class 6 generally conforms to IEC 60228.
- Insulation** : Double sheathed with a specially developed thermo plastic elastomeric.
- Separation** : Polyester tape
- Outer Sheath** : HOFR Rubber sheath black or orange and oil resistant
- Test Voltage** : 100V

An ISO 9001:2015  

GOUGING ELECTRODES:

Designed specifically for the Air Carbon – Arc Process

PRODUCT FEATURES:

- ⚡ Designed specifically for the Air Carbon – Arc Process
- ⚡ Excellent arc stability
- ⚡ Superior metal removal rate
- ⚡ Cool operation
- ⚡ Uniform diameter
- ⚡ Clean machine-like grooves or cuts



TECHNICAL PARAMETERS			
DIA X LENGTH	INCHES	CURRENT RANGE (Amp)	PACKING
6.5 x 305 x (355)	1/4 x 12" (14")	320 – 370	50 PCS / PKT
8 x 305 x (355) (455) (510)	5/16 x 12" (14") (18") (20")	400 – 450	50 PCS / PKT
10 x 305 x (355) (455) (510)	3/8 x 12" (14") (18") (20")	500 – 550	50 PCS / PKT
12.6 x 305 x (355) (455) (510)	1/2 x 12" (14") (18") (20")	800 – 1000	50 PCS / PKT
16 x 305 x (355) (455) (510)	5/8 x 12" (14") (18") (20")	1000 – 1200	25 PCS / PKT

GOUGING TORCHES



MODEL: T4000 (1000A) WITH 2 METERS CABLE

- ⚡ Suit: Pointed and Flat Carbon from 1/8" (3.2mm) to 5/8" (16mm)
- ⚡ Current: 1000 A
- ⚡ Compressed Air Pressure: 80 PSI (5.6kh/cm2)
- ⚡ Flow Rate: 36 cfm



MODEL: T5000 (1250A) WITH 2 METERS CABLE

- ⚡ Suit: Pointed and Flat Carbon from 1/8" (3.2mm) to 5/8" (16mm)
- ⚡ Current: 1250 A
- ⚡ Compressed Air Pressure: 80 PSI (5.6kh/cm2)
- ⚡ Flow Rate: 36 cfm

**AUTO DARKENING HELMET
MODEL – GX-600S**



WELDING HELMET WITH LENS



WELDING HELMET SPRING TYPE



WELDING HAND SHEILD



WELDING JACKET



MODEL : LJ-1

LEATHER APRON



MODEL : LA-1

LEATHER HAND SLEEVE



MODEL : LHS

LEATHER LEG GUARD



MODEL : LHG

LEATHER WELDING GLOVES 16"



MODEL : RJ 01

ARC WELDING GLOVES SIZE 16"



MODEL : RJ 02

TIG WELDING GLOVE SIZE - 14"



MODEL : TIGMAN

TIG WELDING GLOVE SIZE - 14"



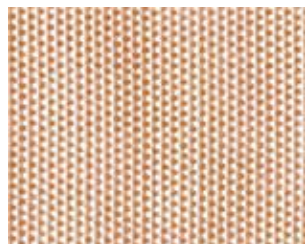
MODEL : TIGMAN 4000

WELDING GOGGLE - WG01



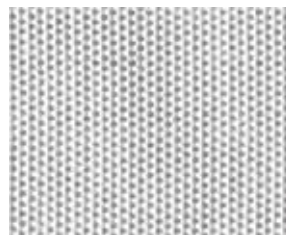
MODEL : WG01

FIRE BLANKET



MODEL : 3800

FIRE BLANKET



MODEL : 3732

SAFETY SHOES



BOOT MODEL : 8061

CUT FIRE BLANKET

Size
1.2 M
1.8 M
2.4 M
3.0 M



**DARK WELDING GLASS FOR
WELDING SPARKS**



**WELDING CURTAINS
WITH STAND**



**FIRE RETRADANT PVC
TARPAULIN G - TARP**





TECHWELD INDUSTRIAL TECHNOLOGIES LTD

Office 1078 Great Northern House
275 Densgate, M3 4EL
Manchester, United Kingdom

info@techweld.co.uk
www.techweld.co.uk

